

Your Reliable Partner

PENASCOP CHINA LIMITED

TABLE OF CONTENTS

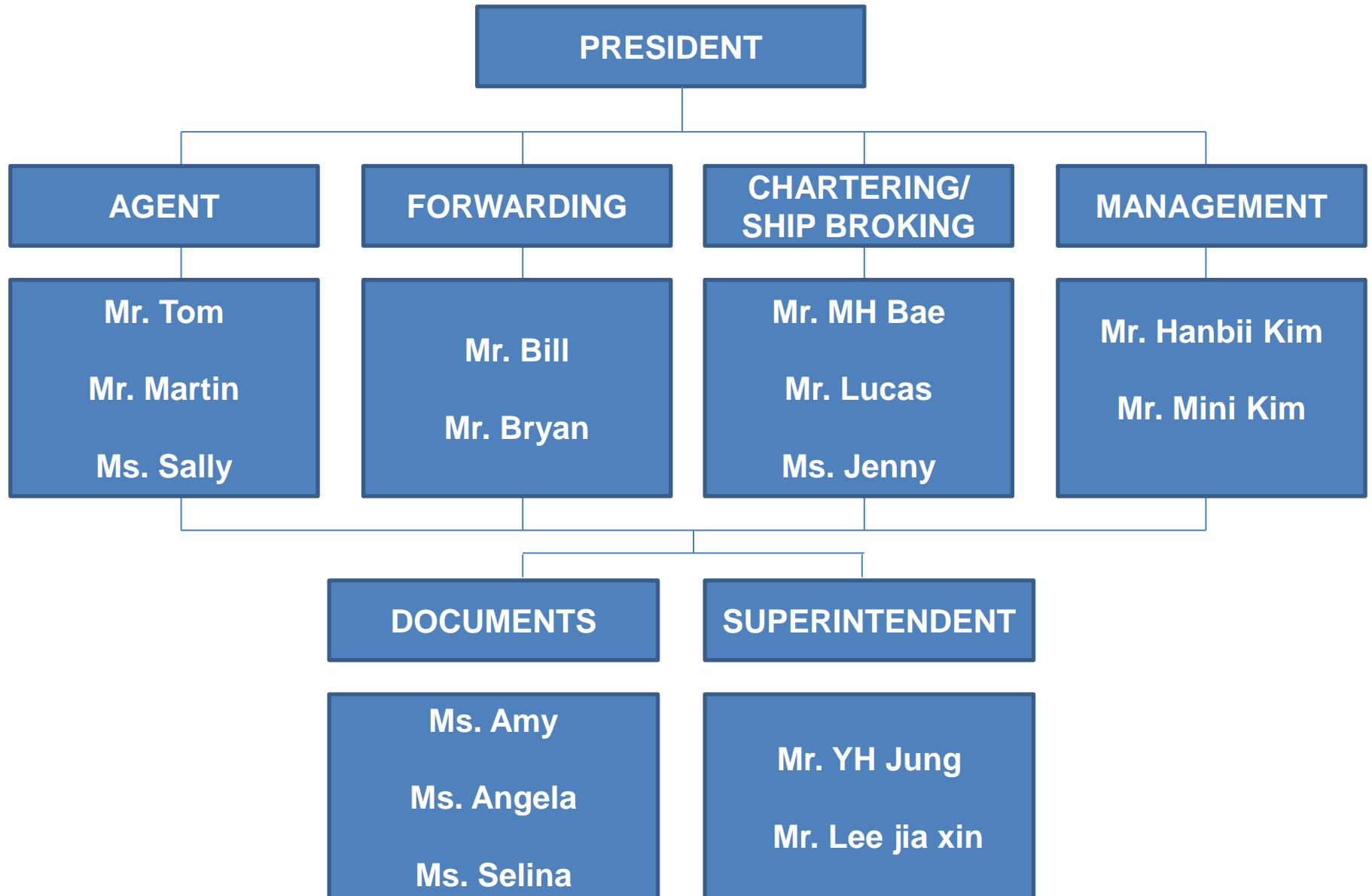
1. COMPANY OVERVIEW
-ORGANIZATION

2. BUSINESS SCOPE

- AGENCY SERVICE**
- FORWARDING & SHIP BROKING**
- SHIP CHARTERING**
- S&P BROKING**

3. FLEET SUMMERY

- PRIORITIES**
- SERVICE MAP**



COMPANY OVERVIEW



PENACOP CHINA LIMITED is a comprehensive marine service company by providing our full service in liner agency, port agency, off shore support and ship broking & forwarding in China.

With long-Term good relationship with Port Authority, Harbour master, Immigration office, Stevedore company, we have successfully set up a integrated service structure. Qualified staff with long experience and precise information add to the strength competence.

It was established in 2010, although we are a young company, we are passion, dynamic and growing. We are ready to be your best partner and satisfy your needs & wants.

PORT AGENCY

PROTECTIVE AGENCY

HUSBANDARY AGENCY

Penascop China Limited provides a wide range of Port Agency Services for cargo calls in all over ports in China. With a strong relationship with port authorities, ensure the smooth and timely berthing and dispatch of principal's vessels. Our owned highly skilled and experienced staff and port captains are trained to foresee expected problems and act upon before problems occurrence.

Our fully comprehensive services include:

- | | | |
|-----------------------------|-------------------------|--------------------|
| › Port information | › Load/ Discharge | › Stevedoring |
| › Surveys | › Cargo Superintendants | › Vessel Clearance |
| › Cargo transshipment | › Repairs | › Spares Delivery |
| › Bunker calls coordination | › Market intelligence | › Dry Dock |
| › Cash to master | › Crew Changes | › Port Captain |
| › P & I Advice | | |

Further services and requirement can still be added on a case-by-case basis according to the specific needs of each port call.

PORT AGENCY

PROTECTIVE AGENCY

HUSBANDARY
AGENCY

Penascop China Limited can offer a protecting agency service. It helps owner and operator supervise the charterer's agency function and monitor port call operation. Once appointed as your protecting agency, provide a scalable service from provision of a independent report to full involvement in expediting a port call.

Service we always perform :

- › Checking and discount proforma D/A submitted by the head agent for compliance with applicable tariff.
- › Receipt of owners' funds and payment to head agents.
- › Reporting the vessel/ cargo status.
- › Checking cargo documents/ SOF/ Time sheets
- › Handling Bill of Lading

As protective agents, we ensure that your interests are well taken care of. We have clearly defined global services designed with this in mind.

PORT AGENCY

PROTECTIVE AGENCY

**HUSBANDRY
AGENCY**

Penascop China Limited is your reliable agent in port to take care of husbandry matters. With a solid relationship with providers and port & immigration authorities, and skills to deliver cost effective and on-time service, ensure our principals receive a consistent first class service. Speedy and well-coordinated delivery of husbandry service during your port call or at anchorage will ensure efficient vessel turn-around , minimizing time spent at port.

Our husbandry support service include:

- › Crew handling : Crew change assistance, Medical assistance, shore pass, hotel booking etc.
- › Bunker supply coordination
- › Spare parts coordination
- › Customs clearance of ships
- › Communications assistance
- › Comprehensive support for dry-docking & Repair.
- › Cash to master
- › Provision and fresh water
- › Measurement & Survey

Experience... Ability... Reliability...



- A good relationship with port authorities & immigration office , reduce ship waiting time and vessel will turn around smoothly .
- With strong links to local service provider like a tug and stevedore company, we can reduce port call related expenses.
- The accumulated know-how and task related knowledge in all type of vessels maximize customer's satisfaction.
- Well-trained human resource for timely reporting, daily activity reporting, immediate statistic reporting through various networks.

SERVICE MAP

